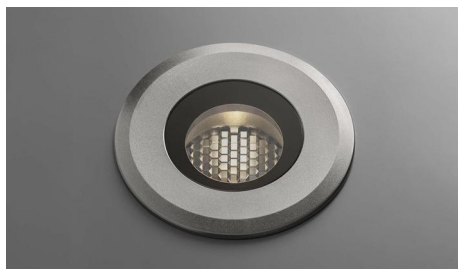
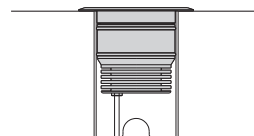


TERRA INCASSO / FLOOR BUILT-IN

MAXI DOT UP LIGHT Ø100



Alluminio, acciaio inox 316, vetro
Fascio di luce verso l'alto
Driver: escluso




Aluminum, stainless steel 316, glass
 Light beam: upward-projected
 Driver: excluded

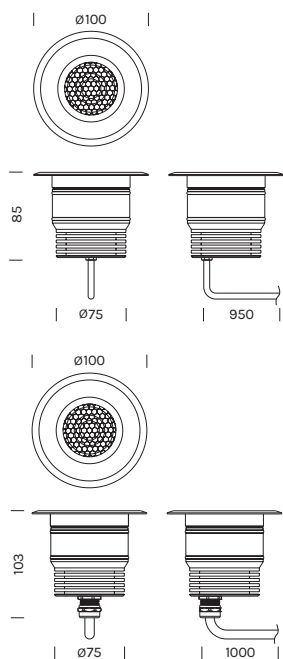


115	M 2700K	W 3000K	N 4000K	RGBW RGB+3000K
Potenza/ Power	1x 8,7W	1x 8,7W	1x 8,7W	1x 7,9W
Lumen	1x 1009 lm	1x 1052 lm	1x 1087 lm	1x 465lm
CRI	>90	>90	>90	>90
Alimentazione/ Supply	24Vdc	24Vdc	24Vdc	24Vdc

Articolo Item	Temperatura Temperature	°Optica °Optic	Finitura Finish
---------------	-------------------------	----------------	-----------------

115	M	00	-AI 
	W	12	
	N	35	
		55	

115	RGBW	24	-AI 
		36	
		60	



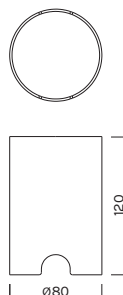
La versione RGBW necessita dell'Alimentatore in 24Vdc in tensione + la Centralina RGBW.
 RGBW version requires constant voltage driver 24Vdc + driver RGBW

Controcassa / Outercasing

Controcassa Inox
Stainless steel outercasing

Articolo
Item

CN10



Alimentatori 24Vdc in tensione in remoto / Remote constant voltage drivers 24Vdc

Articolo Item	Potenza Power	IP	Dimensioni Dimensions	N° art. alimentabili N° of items powerable	Dimmer
1A0143	14W MAX	IP67	90x39x19	1	-
1A0148	30W MAX	IP67	175x42x34	1-2	-
1A0149	75W MAX	IP67	200x50x32	1-4	-
1A0147	240W MAX	IP67	244x68x39	1-18	-

Controller per versione RGBW / Controller for RGBW version

Articolo Item	Potenza Power	IP	Dimensioni Dimensions	N° art. alimentabili N° of items powerable	Dimmer
2A4314	67W MAX	IP20	90x71x58	1-7	DALI
2A4315	67W MAX	IP20	90x71x58	1-7	DMX
2A6165	67W MAX	IP20	90x71x58	1-7	PUSH